



# INTERNSHIP OPPORTUNITIES

**CATALOGUE 2024**



# INTRODUCTION



**HELLO AND WELCOME TO CYPRUS WILDLIFE RESEARCH INSTITUTE CATALOGUE OF INTERNSHIP OPPORTUNITIES 2024!**

So you have decided to come to our doors and open your heart to something new? You are about to embark on an adventure which is filled with exciting, challenging and engaging experiences! This catalogue will provide you with important information about CWRI's Volunteer Programs, as well as our mission and vision. It will give you thorough information about our various Volunteer opportunities and a journey into some of our exciting projects and initiatives, in order to make the choice easier for you. Take some time to read through this catalogue, so that you can get an impression of what your volunteer journey with the CWRI will look like.

# ABOUT CYPRUS



**CYPRUS, THE THIRD-LARGEST ISLAND IN THE MEDITERRANEAN SEA, IS RENOWNED FOR ITS RICH NATURAL BEAUTY AND A VIBRANT TAPESTRY OF CULTURAL HISTORY. WITH ITS STRATEGIC LOCATION AT THE CROSSROADS OF EUROPE, ASIA, AND AFRICA, CYPRUS HAS BEEN A MELTING POT OF CIVILIZATIONS FOR MILLENNIA, EACH LEAVING AN INDELIBLE MARK ON THE ISLAND'S HERITAGE. THE ISLAND'S DIVERSE LANDSCAPES RANGE FROM PRISTINE BEACHES WITH CRYSTAL-CLEAR WATERS TO RUGGED MOUNTAIN RANGES AND ROLLING PLAINS. THIS VARIED TOPOGRAPHY HOSTS AN IMPRESSIVE ARRAY OF FLORA AND FAUNA, INCLUDING UNIQUE ENDEMIC SPECIES. THE UNIQUE GEOGRAPHICAL LOCATION OF CYPRUS MAKES IT A CRUCIAL STOPOVER FOR MIGRATORY BIRDS, ADDING TO ITS ECOLOGICAL IMPORTANCE. THE ISLAND'S MARINE ENVIRONMENT, ESPECIALLY ITS COASTAL AND MARINE ECOSYSTEMS, ARE VITAL HABITATS FOR A RANGE OF SPECIES, INCLUDING THE MEDITERRANEAN MONK SEAL AND VARIOUS SEA TURTLE SPECIES.**

# ABOUT US



**CYPRUS WILDLIFE RESEARCH INSTITUTE (CWRI) IS A PROMINENT NON-PROFIT NON-GOVERNMENTAL ORGANIZATION, FOUNDED IN 2018 WITHIN CYPRUS. WITH A STEADFAST COMMITMENT TO THE CONSERVATION AND EXAMINATION OF CYPRUS' BIODIVERSITY, CWRI EXECUTES A COMPREHENSIVE RANGE OF ACTIVITIES. THESE INCLUDE WILDLIFE RESCUE AND REHABILITATION, ENVIRONMENTAL EDUCATION, SCIENTIFIC SURVEYS, MONITORING PROGRAMS, AND HABITAT MAPPING, AMONG OTHERS. COLLABORATING WITH VARIOUS RESEARCH INSTITUTIONS AND UNIVERSITIES, BOTH LOCALLY AND INTERNATIONALLY, CWRI ACTIVELY SHARES KNOWLEDGE AND EXPERTISE.**

# ABOUT US

UNDER THE CWRI UMBRELLA, THREE OPERATIONAL PROGRAMS TAKE THE LEAD:

- 1. RESCUE, TREATMENT AND REHABILITATION**
- 2. RESEARCH AND CONSERVATION**
- 3. AWARENESS RAISING & CAPACITY DEVELOPMENT.**

**1. RESCUE, TREATMENT, AND REHABILITATION:** THESE OPERATIONS ARE CARRIED OUT AT THE WILDLIFE RESCUE AND REHABILITATION CENTER (WRRC) AND THE WILDLIFE HOSPITAL AND RESEARCH LABORATORY (WHRL). COMMITTED TO THE INTERNATIONAL WILDLIFE REHABILITATION COUNCIL'S STANDARDS, THESE FACILITIES ADMINISTER MEDICAL CARE TO NEARLY A THOUSAND INJURED, ORPHANED OR MISPLACED WILD ANIMALS ANNUALLY. ADDITIONALLY, THE CYPRUS MARINELIFE CENTER (CMC) AT THE CWRI'S PRIMARY CAMPUS FOCUSES ON THE ADMISSION AND TREATMENT OF MARINE SPECIES, PARTICULARLY GLOBALLY THREATENED SEA TURTLES.

**2. RESEARCH AND CONSERVATION:** CWRI'S RESEARCH ENDEAVORS SIGNIFICANTLY CONTRIBUTE TO FILLING DATA GAPS CONCERNING THE BIODIVERSITY OF THE CYPRIOT REGION. THIS CRUCIAL WORK NOT ONLY ENHANCES OUR UNDERSTANDING OF LOCAL RARE, CRYPTIC, AND ENDEMIC SPECIES BUT ALSO ENABLES EFFECTIVE HABITAT MONITORING AT A LANDSCAPE LEVEL. FURTHERMORE, THE DEVELOPMENT OF CONSERVATION STRATEGIES ENSURES THE SUSTAINABILITY OF ECOSYSTEMS. BIOLOGICAL SAMPLES AND TISSUES ARE PRESERVED IN THE BIOBANK AND SEEDBANK, SAFEGUARDING VALUABLE GENETIC INFORMATION FOR FUTURE RESEARCH..

**3. AWARENESS RAISING AND CAPACITY DEVELOPMENT:** THROUGH THE CYPRUS ENVIRONMENTAL EDUCATION CENTER (CEEC), CWRI ACTIVELY CONDUCTS PROGRAMS DESIGNED TO FOSTER APPRECIATION FOR LOCAL SPECIES. BY ENGAGING CITIZENS, MINORITIES, AND KEY STAKEHOLDERS INCLUDING DECISION-MAKERS, LOCAL AUTHORITIES, AND GOVERNMENTAL BODIES, THESE INITIATIVES BUILD A COLLABORATIVE ENVIRONMENTAL EFFORT. SCIENTIFIC WORKSHOPS, TRAINING COURSES, AND GUIDED BIODIVERSITY TOURS ARE REGULARLY ORGANIZED TO PROMOTE AWARENESS ABOUT THE PERSISTENT THREATS FACED BY LOCAL WILDLIFE. SUCH A SYSTEMATIC AND MULTI-DISCIPLINARY APPROACH CONTRIBUTES TO ACHIEVING A MORE ROBUST LEVEL OF PROTECTION FOR THE ISLAND'S NATIVE WILDLIFE.

AT CWRI, WE EXTEND AN INVITATION TO NATIONAL AND INTERNATIONAL VOLUNTEERS FROM DIVERSE BACKGROUNDS. THROUGH SPECIALIZED TRAINING AND HANDS-ON EXPERIENCE, VOLUNTEERS PARTICIPATE IN OBSERVING AND CONSERVING CYPRUS'S RICH WILDLIFE. AS WE STRIVE TO STRIKE A BALANCE BETWEEN THE ISLAND'S ECONOMIC GROWTH AND ENVIRONMENTAL SUSTAINABILITY, CWRI REMAINS DEDICATED TO ENSURING THE LONG-TERM SURVIVAL OF CYPRUS' UNIQUE WILDLIFE AND ECOSYSTEMS.

**YOUR SUPPORT AND EFFORT ARE TRULY APPRECIATED AND HELP US MAKE A DIFFERENCE.**



# INTERNSHIP OPPORTUNITIES







# JOIN THE TEAM

WILDLIFE HOSPITAL IS LOOKING  
FOR VOLUNTEERS!



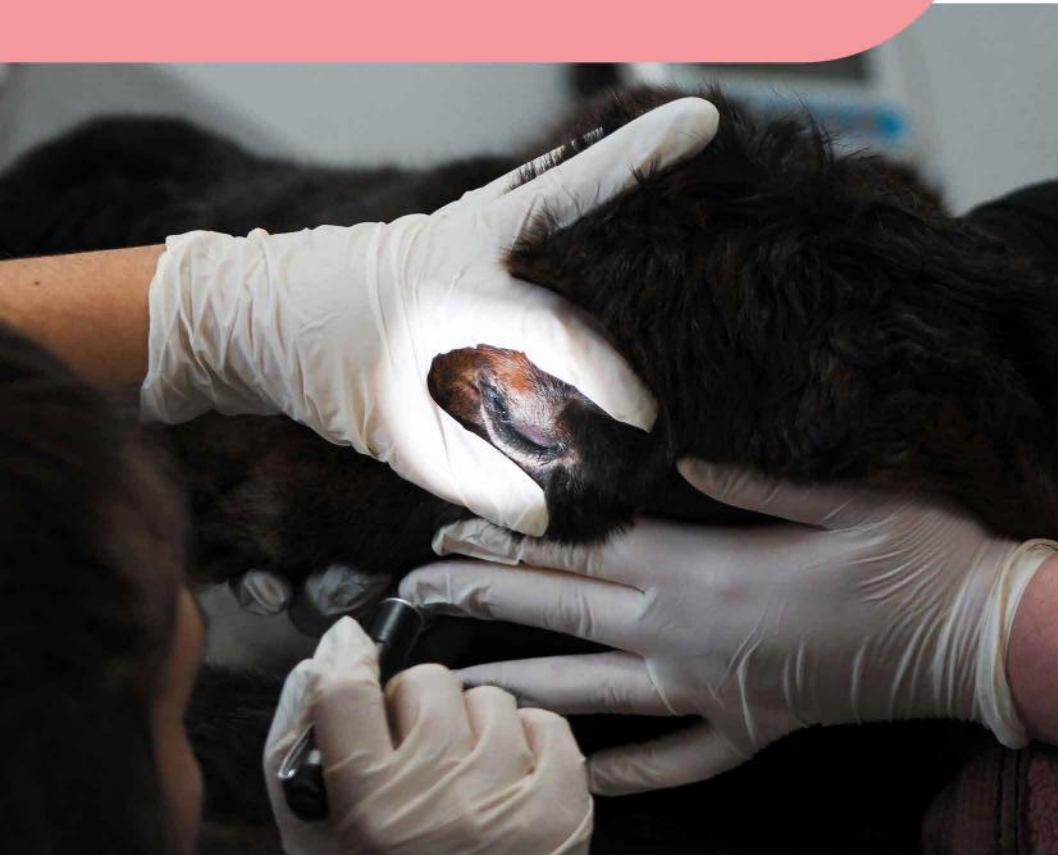
**WILDLIFE**  
H O S P I T A L

1

✉ [INFO@CWRI.NET](mailto:INFO@CWRI.NET)

 [WWW.CWRI.NET](http://WWW.CWRI.NET)

# V E T STUDENTS F O R W I L D L I F E H O S P I T A L



## PROJECT DESCRIPTION

BY APPLYING TO THIS PROGRAM, YOU WILL GET A CHANCE TO ATTEND THE TREATMENT AND REHABILITATION OF VARIOUS NATIVE, EXOTIC AND DOMESTIC SPECIES, SUCH AS REPTILES (SNAKES, TERRAPINS, TORTOISES, SEA TURTLES), BIRDS (RAPTORS, OWLS, SONGBIRDS, WADING BIRDS AND OTHERS) AND MAMMALS (DONKEYS, FOXES, HEDGEHOGS ...). YOU WILL NOT ONLY RECEIVE THEORY, BUT MORE IMPORTANTLY, PRACTICE CLINICAL EXAMINATIONS TO CORRECTLY DETERMINE DIAGNOSIS, PROGNOSIS, AND MEDICAL TREATMENT PLAN.

WILDLIFE HOSPITAL AND WILDLIFE RESCUE AND REHABILITATION CENTER, OPERATED BY CYPRUS WILDLIFE RESEARCH INSTITUTE, ARE AMONG THE FOREMOST WILDLIFE TREATMENT AND REHABILITATION CENTERS IN THE EASTERN MEDITERRANEAN REGION. LOCATED WITHIN TAŞKENT NATURE PARK, OUR WILDLIFE HOSPITAL RECEIVES NEARLY 1000 ANIMAL PATIENTS, FROM AS MANY AS 160 SPECIES EACH YEAR. AFTER THE INITIAL ADMISSION, THEY RECEIVE SPECIALIZED, HIGH-QUALITY CARE TO ENSURE THEIR SAFE RETURN TO THE WILD. WE NOW PROVIDE A UNIQUE OPPORTUNITY FOR STUDENTS AND GRADUATES FROM VETERINARY SCIENCE PROGRAMS TO JOIN OUR TEAM AND EXPERIENCE DAILY LIFE AT OUR REMARKABLE FACILITY, ONE OF A KIND IN THE WHOLE OF CYPRUS!



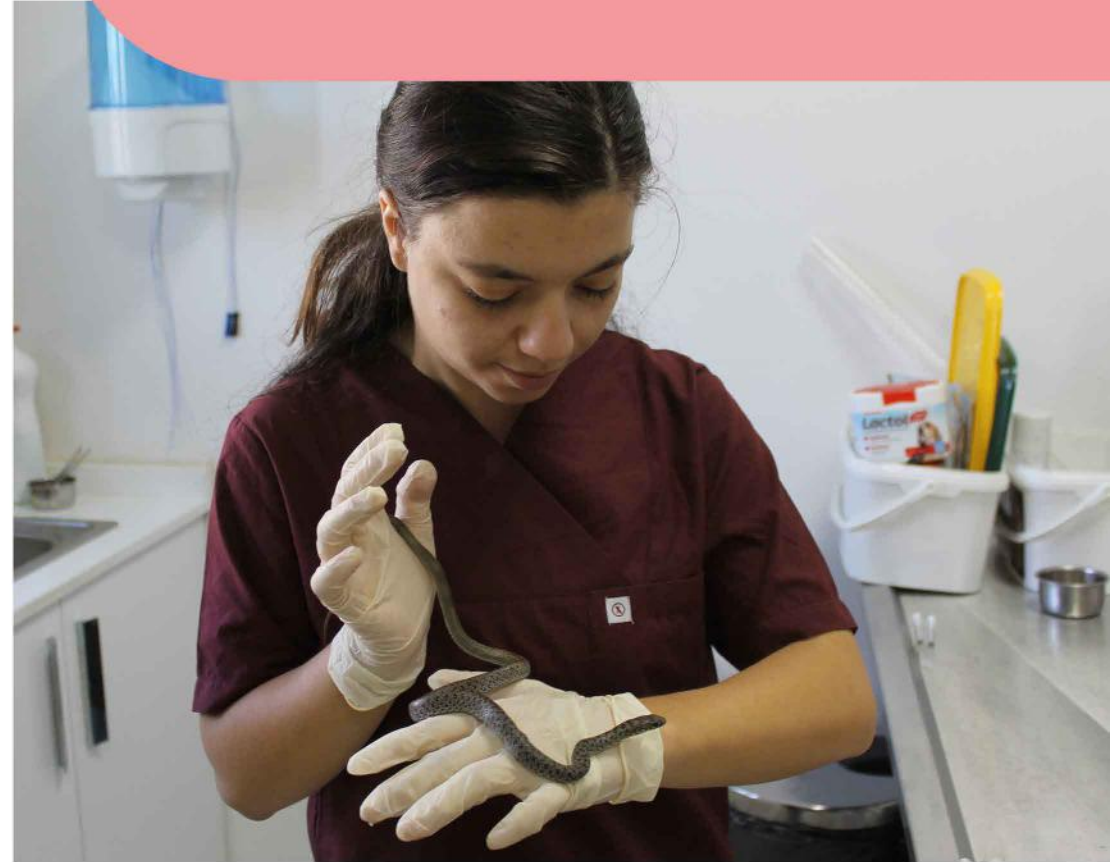
OUR VOLUNTEERS ARE INVOLVED WITH EVERY ASPECT OF WILDLIFE EMERGENCY CARE, INCLUDING ADMISSION, STABILIZATION, INITIAL EXAMINATION, TREATMENT, AND PHYSICAL THERAPY. ADDITIONALLY, THEY HELP TO ENSURE THE SMOOTH FUNCTIONING OF THE FACILITY AND HIGH STANDARDS OF ANIMAL CARE.

### **SPECIFIC DUTIES INCLUDE:**

- HANDLING AND RESTRAINT OF WILDLIFE
- EXAMINATION AND CRITICAL CARE OF NEWLY ADMITTED PATIENTS
- SPECIALIZED TREATMENT AND THERAPY
- ASSESSMENT OF THE OVERALL HEALTH STATE OF ANIMALS IN CARE
- ASSISTING WITH DIAGNOSTIC IMAGING AND MEDICAL PROCEDURES
- GENERAL AND SPECIALIZED ANIMAL CARE
- UPDATING MEDICAL CARE AND TREATMENT PROTOCOLS
- CLEANING AND SANITIZING HOSPITAL FACILITIES
- ADMINISTRATIVE TASKS



# **V E T STUDENTS F O R W I L D L I F E H O S P I T A L**



APART FROM TAKING CARE OF INJURED, SICK AND ORPHANED NATIVE FAUNA, OUR WILDLIFE HOSPITAL CARES AND TREATS FARM ANIMALS AND EXOTIC SPECIES THAT ARE HOUSED ON OUR PREMISES. THESE ANIMALS ARE BEING FREQUENTLY BROUGHT TO OUR FACILITY DUE TO POOR WELFARE CONDITIONS OR ILLEGAL ORIGIN. OUR VOLUNTEERS HELP TO ENSURE THE BEST POSSIBLE CARE (INCLUDING GENERAL ANIMAL CARE AND SPECIALIZED MEDICAL CARE) TO ALLOW THEM TO RESTORE THEIR SPECIES-SPECIFIC BEHAVIORS AND GOOD LEVELS OF PHYSICAL AND PSYCHOLOGICAL HEALTH.

# V E T STUDENTS F O R W I L D L I F E H O S P I T A L

## TRAINING DURING THE PROJECT

OUR FACILITY AIMS FOR THE HIGHEST STANDARDS OF ANIMAL CARE. FOR THIS REASON, WE ASK OUR VOLUNTEERS TO HAVE AN EDUCATIONAL BACKGROUND IN VETERINARY SCIENCE AND RELATED FIELDS. PREVIOUS EXPERIENCE WITH WILDLIFE IS NOT REQUIRED. OUR TEAM OF EXPERTS WILL GUIDE YOU THROUGH THE PROCEDURES AND PROVIDE YOU WITH ALL THE NECESSARY INFORMATION TO ENSURE THE MOST VALUABLE WILDLIFE VET EXPERIENCE WHILE MAKING SURE THAT ALL SAFETY AND WELFARE REQUIREMENTS OF WILDLIFE REHABILITATION ARE MET.

WHILST WE PREFER THAT APPLICANTS HAVE SOME EXPERIENCE IN THE RELEVANT FIELD, WE WELCOME ALL APPLICATIONS AND WILL REVIEW EACH EQUALLY AND FAIRLY. DO NOT LET THIS DISSUADE YOU FROM APPLYING!



## REQUIREMENTS

- MINIMUM DURATION OF STAY: 1 MONTH
- GOOD PROFICIENCY IN ENGLISH
- EDUCATIONAL BACKGROUND IN VETERINARY AND RELATED FIELDS
- RELIABILITY, TRUSTWORTHINESS, RESPONSIBILITY, DEDICATION



## ACCOMMODATION, FOOD AND TRANSPORT

OUR VOLUNTEERS ARE PROVIDED THE ACCOMMODATION AND KITCHEN FACILITIES, ALL WITHIN THE WALKING DISTANCE OF FACILITY'S CAMPUS. AFTER APPLYING TO THE PROGRAM, OUR COORDINATOR WILL HELP YOU WITH THE TRAVEL ARRANGEMENTS AND WILL DISCUSS THE POSSIBILITY OF AIRPORT TRANSFER ORGANIZED BY CWRI. PLEASE APPLY TO RECEIVE FURTHER DETAILS.

## HIGHLIGHTS OF THE PROGRAMME

- GAIN VALUABLE WORK EXPERIENCE IN WILDLIFE HOSPITAL
- LEARN HOW TO HANDLE AND RESTRAIN WILD BIRDS, REPTILES, AND MAMMALS
- PRACTICE CLINICAL EXAMINATION, EMERGENCY CARE, AND MEDICAL SKILLS ON A WIDE VARIETY OF SPECIES
- ASSIST OUR EXPERT WILDLIFE VETERINARIAN WITH MEDICAL PROCEDURES, SURGERIES, AND NECROPSIES
- LEARN HOW TO RESTRAIN AND POSITION WILDLIFE FOR RADIOGRAPHY
- LEARN HOW TO IDENTIFY HUNDREDS OF SPECIES, INCLUDING NATIVE MEDITERRANEAN FAUNA, EXOTIC AND DOMESTIC SPECIES
- LIVE IN AN AREA SURROUNDED BY NATURE AND WITH A WHOLE ISLAND VIEW
- WORK IN A MULTINATIONAL TEAM OF VOLUNTEERS



# V E T STUDENTS F O R W I L D L I F E H O S P I T A L



## COST

THERE IS NO FEE FOR THE VOLUNTEERING OPPORTUNITY ITSELF. FOOD, ACCOMMODATION, INTERNET AND OTHER SERVICES ARE PROVIDED TO THE VOLUNTEERS FOR A FLAT FEE OF 20€ PER DAY VOLUNTEERS CAN ALSO JOIN OCCASSIONAL FIELD TRIPS AT NO ADDITIONAL COST. FEES FOR THIS POSITION CAN BE COVERED BY ERASMUS+ SCHOLARSHIP.

# V E T STUDENTS F O R W I L D L I F E H O S P I T A L



TO SUBMIT YOUR APPLICATION, PLEASE VISIT:

[HTTPS://V.CWRI.NET/PROJECTS/35](https://v.cwri.net/projects/35)

OUR TEAM WILL CONTACT YOU AND SHARE ALL THE NECESSARY INFORMATION TO ARRANGE YOUR STAY.

PLEASE CONTACT US AT [INFO@CWRI.NET](mailto:info@cwri.net) IF YOU HAVE ANY QUESTIONS OR TROUBLE WITH THE APPLICATION SYSTEM.



2

✉ INFO@CWRI.NET

🌐 WWW.CWRI.NET

# WILDLIFE

RESCUE AND REHABILITATION CENTER



# VOLUNTEER WITH US

## IN WILDLIFE RESCUE AND REHABILITATION CENTER



OPERATED BY CYPRUS WILDLIFE RESEARCH INSTITUTE, OUR WILDLIFE RESCUE AND REHABILITATION CENTER REPRESENTS THE ONLY FACILITY SPECIALIZING IN THE TREATMENT OF INJURED WILDLIFE, IN THE WHOLE OF CYPRUS. OUR VOLUNTEERS GET A CHANCE TO LEARN ABOUT HUNDREDS OF SPECIES OF NATIVE, EXOTIC, AND DOMESTIC ANIMALS, WHILE HELPING THEM RECOVER FROM INJURIES, ILLNESSES, AND THE TRAUMA OF BEING ORPHANED, ILLEGALLY TRAFFICKED, OR KEPT IN POOR WELFARE CONDITIONS. BY APPLYING TO THIS PROGRAM, YOU WILL LEARN AND ATTEND THE TREATMENT AND REHABILITATION OF VARIOUS NATIVE, EXOTIC AND DOMESTIC SPECIES, SUCH AS REPTILES (SNAKES, TERRAPINS, TORTOISES, SEA TURTLES), BIRDS (RAPTORS, OWLS, SONGBIRDS, WADING BIRDS AND OTHERS) OR MAMMALS (DONKEYS, FOXES, HEDGEHOGS ...). YOU WILL NOT ONLY LEARN THEORY, BUT PRACTICE HOW TO SAFELY RESTRAIN AND RELOCATE ANIMALS, TAKE MORPHOMETRIC MEASUREMENTS, BAND THE BIRDS AND PROVIDE SPECIES-SPECIFIC ANIMAL CARE.



## ANIMAL CARETAKERS FOR WILDLIFE RESCUE CENTER



### PROJECT DESCRIPTION

EACH YEAR, HUNDREDS OF WILD ANIMALS ARE BROUGHT INTO TAŞKENT NATURE PARK DUE TO BEING ORPHANED, SICK, OR INJURED. AFTER THE INITIAL ADMISSION, THEY RECEIVE SPECIALIZED, HIGH-QUALITY CARE, MEDICAL TREATMENT, AND PHYSICAL REHABILITATION TO ENSURE THEIR SAFE RETURN TO THE WILD. OUR VOLUNTEERS AND INTERNS ARE INVOLVED WITH MULTIPLE ASPECTS RELATED TO THIS PROCESS.

# ANIMAL CARETAKERS FOR WILDLIFE RESCUE CENTER



## SPECIFIC DUTIES INCLUDE:

- GENERALIZED AND SPECIALIZED CARE OF NATIVE CYPRIOT FAUNA
- REHABILITATION OF INJURED WILDLIFE
- MONITORING OF BEHAVIOR AND POSTURE OF ANIMALS IN REHABILITATION FACILITIES AND WILDLIFE SANCTUARY
- ANIMAL HEALTH CHECKUPS, WEIGHING, RINGING, MEASURING
- UPDATING PATIENT'S RECORDS
- CLEANING, PREPARATION AND MAINTENANCE OF ANIMAL ENCLOSURES
- DESIGNING AND CONSTRUCTING ANIMAL ENRICHMENTS
- MAINTAINING FACILITIES AND GROUNDS TO ENSURE SMOOTH FUNCTIONING AND HIGH STANDARDS
- ATTENDING WILDLIFE RELEASES AND EDUCATIONAL EVENTS

## TRAINING DURING THE PROJECT

OUR FACILITY AIMS FOR HIGH STANDARDS OF ANIMAL CARE AND WE EXPECT OUR VOLUNTEERS AND INTERNS TO BE STUDENTS OR GRADUATES OF PROGRAMS RELATED TO, TO BIOLOGY, ANIMAL HUSBANDRY, AGRICULTURE, FORESTRY, VETERINARY AND SIMILAR. PREVIOUS EXPERIENCE IN THE FIELD OF WILDLIFE REHABILITATION, ANIMAL CARE, AND CONSERVATION IS PREFERABLE BUT NOT A PREREQUISITE. OUR TEAM WILL PROVIDE YOU WITH THE APPROPRIATE TRAINING AND SUPPORT TO ENSURE THAT ALL SAFETY AND WELFARE REQUIREMENTS OF WILDLIFE REHABILITATION ARE MET. WE EXPECT ALL TRAINEES TO BE ENTHUSIASTIC AND WILLING TO LEARN WHILE FOLLOWING THE CODE OF ETHICS AT ALL TIMES.

WHILST WE PREFER THAT APPLICANTS HAVE SOME EXPERIENCE IN THE RELEVANT FIELD, WE WELCOME ALL APPLICATIONS AND WILL REVIEW EACH EQUALLY AND FAIRLY. DO NOT LET THIS DISSUADE YOU FROM APPLYING!



## ACCOMMODATION, FOOD AND TRANSPORT

THE CAMPUS OF CWRI IS LOCATED WITHIN TAŞKENT NATURE PARK, WHICH IS SITUATED IN KYRENIA DISTRICT IN CYPRUS. OUR VOLUNTEERS ARE PROVIDED THE ACCOMMODATION AND KITCHEN FACILITIES, ALL WITHIN THE WALKING DISTANCE OF THE FACILITY'S CAMPUS. AFTER APPLYING TO THE PROGRAM, OUR COORDINATOR WILL HELP YOU WITH THE TRAVEL ARRANGEMENTS AND DISCUSS THE POSSIBILITY OF AIRPORT TRANSFER ORGANIZED BY CWRI. PLEASE APPLY TO RECEIVE FURTHER DETAILS.

## ANIMAL CARETAKERS FOR WILDLIFE RESCUE CENTER



## REQUIREMENTS

- MINIMUM DURATION OF STAY: 1 MONTH
- ENGLISH LANGUAGE
- EDUCATIONAL BACKGROUND IN BIOLOGY, ANIMAL HUSBANDRY, AGRICULTURE, ANIMAL SCIENCE, FORESTRY, VETERINARY AND SIMILAR
- MODERATE LEVEL OF FITNESS
- TEAMWORK
- RESPONSIBILITY, DEDICATION, RESPECTFULNESS

# ANIMAL CARETAKERS FOR WILDLIFE RESCUE CENTER



## COST

THERE IS NO FEE FOR THE VOLUNTEERING OPPORTUNITY ITSELF. FOOD, ACCOMMODATION, INTERNET AND OTHER SERVICES ARE PROVIDED TO THE VOLUNTEERS FOR A FLAT FEE OF 20€ PER DAY VOLUNTEERS CAN ALSO JOIN OCCASSIONAL FIELD TRIPS FREE OF CHARGE. FEES FOR THIS POSITION CAN BE COVERED BY ERASMUS+

S C H O L A R S H I P .

## HIGHLIGHTS OF THE PROGRAM

- GAIN VALUABLE WORK EXPERIENCE IN THE FOREMOST WILDLIFE RESCUE AND REHABILITATION CENTER
- LEARN HOW TO HANDLE, RESTRAIN, MEASURE, AND RING WILD ANIMALS
- LEARN HOW TO IDENTIFY HUNDREDS OF SPECIES, INCLUDING NATIVE MEDITERRANEAN FAUNA, EXOTIC AND DOMESTIC SPECIES
- LEARN MORE ABOUT INTRA AND INTER-SPECIFIC BEHAVIORS OF NATIVE, EXOTIC, AND DOMESTIC ANIMALS
- JOIN EDUCATIONAL EVENTS
- LIVE IN AN AREA SURROUNDED BY NATURE AND WITH A WHOLE ISLAND VIEW
- WORK IN A MULTINATIONAL TEAM OF VOLUNTEERS



A woman with dark hair, wearing a bright yellow t-shirt with the number '1190' on the sleeve, is sitting on the ground in a natural, rocky, and grassy environment. She is smiling and looking towards the camera. In the foreground, a bird of prey, possibly a falcon or hawk, is captured in mid-flight with its wings spread wide. The background features a chain-link fence supported by green posts, and beyond that, a rocky hillside with sparse green vegetation and trees under a clear sky.

# **ANIMAL CARETAKERS FOR WILDLIFE RESCUE CENTER**

**TO SUBMIT YOUR APPLICATION, PLEASE VISIT:**

**[HTTPS://V.CWRI.NET/PROJECTS/32](https://v.cwri.net/projects/32)**

**OUR TEAM WILL CONTACT YOU AND SHARE ALL THE NECESSARY INFORMATION TO ARRANGE YOUR STAY.**

**PLEASE CONTACT US AT [INFO@CWRI.NET](mailto:info@cwri.net) IF YOU HAVE ANY QUESTIONS OR TROUBLE WITH THE APPLICATION SYSTEM.**



# WILDLIFE

RESCUE AND REHABILITATION CENTER

3



# BABY NURSERY VOLUNTEERS WANTED

✉ [INFO@CWRI.NET](mailto:INFO@CWRI.NET)

 [WWW.CWRI.NET](http://WWW.CWRI.NET)

**WILDLIFE RESCUE AND REHABILITATION CENTER, OPERATED BY CYPRUS WILDLIFE RESEARCH INSTITUTE, IS AMONG THE FOREMOST WILDLIFE TREATMENT AND REHABILITATION CENTERS IN THE EASTERN MEDITERRANEAN REGION. APART FROM INJURED AND SICK FAUNA, WE RECEIVE HUNDREDS OF HUNGRY ORPHANED ANIMAL BABIES THAT NEED LOTS OF QUALITY CARE. BABY BIRDS (HATCHLINGS, NESTLINGS, FLEDGLINGS), HOGLETS AND LEVERETS ARE AMONGST THE MOST COMMONLY ADMITTED YOUNGSTERS, BUT BAT, FOX, DONKEY OR SEA TURTLE JUVENILES ARE FREQUENTLY TREATED AS WELL.**



## **CARETAKERS FOR BABY NURSERY**



### **PROJECT DESCRIPTION**

**LOCATED WITHIN TAŞKENT NATURE PARK, OUR WILDLIFE HOSPITAL RECEIVES NEARLY 1000 ANIMAL PATIENTS, FROM AS MANY AS 160 SPECIES EACH YEAR. BETWEEN APRIL AND JULY, HUNDREDS OF INJURED, SICK, AND ORPHANED BABIES ARE BROUGHT TO THE WILDLIFE HOSPITAL AND OUR DEDICATED VOLUNTEERS HELP TO TAKE CARE OF THESE INNOCENT SOULS. AFTER THE INITIAL ADMISSION, BABIES NEED TO RECEIVE SPECIALIZED, HIGH-QUALITY CARE TO ENSURE HEALTHY AND STEADY GROWTH WITHOUT IMPRINTING ON HUMANS TO FACILITATE THEIR SUCCESSFUL RETURN TO THE WILD. OUR VOLUNTEERS ARE INVOLVED IN ALL TASKS RELATED TO THE REHABILITATION OF YOUNG WILDLIFE, INCLUDING ADMISSION, INITIAL EXAMINATION, TREATMENT, AND GENERAL ANIMAL CARE.**



# CARETAKERS FOR BABY NURSERY

PLEASE NOTE, THAT BABY BIRDS (AS WELL AS JUVENILES OF OTHER SPECIES) REQUIRE FEEDING EVERY 30 OR 60 MINUTES DEPENDING ON THEIR AGE. ALL PRECAUTIONARY MEASURES TO PREVENT TAMING, HABITUATION AND IMPRINTING ON HUMANS AS WELL AS THE DEVELOPMENT OF ABNORMAL BEHAVIORS MUST BE FOLLOWED AT ALL



## SPECIFIC DUTIES INCLUDE:

- HELPING WITH THE INITIAL ADMISSION, EXAMINATION, AND TREATMENT
- REGULAR FEEDING AT SHORT INTERVALS; DAY AND NIGHT EVERY FEW HOURS
- ADMINISTERING ORAL MEDICATION AND SUPPLEMENTS
- DAILY CLEANING OF THE LIVING SPACES (ENCLOSURES, CAGES, BOXES ...)
- TAKING MEASUREMENTS (WEIGHT, WING LENGTH) AND RECORD KEEPING
- SIMPLE DATA ANALYSIS (GROWTH RATE, RELEASE RATE)
- RELEASE OF MATURED BABIES
- UPKEEP OF FACILITIES TO ENSURE A SANITARY ENVIRONMENT, SMOOTH FUNCTIONING, AND HIGH STANDARDS OF ANIMAL CARE

## TRAINING DURING THE PROJECT

OUR TEAM OF EXPERTS WILL GUIDE YOU THROUGH THE PROCEDURES AND PROVIDE YOU WITH ALL THE NECESSARY INFORMATION TO ENSURE THE MOST VALUABLE INFANT WILDLIFE REHABILITATION EXPERIENCE WHILE MAKING SURE THAT ALL SAFETY AND WELFARE REQUIREMENTS ARE MET.



## ACCOMMODATION, FOOD AND TRANSPORT

OUR WILDLIFE HOSPITAL IS LOCATED WITHIN TAŞKENT NATURE PARK, WHICH IS SITUATED IN KYRENIA DISTRICT IN CYPRUS. OUR VOLUNTEERS ARE PROVIDED THE ACCOMMODATION AND KITCHEN FACILITIES, ALL WITHIN THE WALKING DISTANCE OF THE FACILITY'S CAMPUS. AFTER APPLYING TO THE PROGRAM, OUR COORDINATOR WILL HELP YOU WITH THE TRAVEL ARRANGEMENTS AND WILL DISCUSS THE POSSIBILITY OF AIRPORT TRANSFER ORGANIZED BY CWRI. PLEASE APPLY TO RECEIVE FURTHER DETAILS.

## CARETAKERS FOR BABY NURSERY

### REQUIREMENTS

- MINIMUM DURATION OF STAY: 1 MONTHS
- ENGLISH LANGUAGE
- RESPONSIBILITY AND DEDICATION TO THE JOB
- WILLINGNESS TO WORK NIGHT SHIFTS



# CARETAKERS FOR BABY NURSERY



## COST

THERE IS NO FEE FOR THE VOLUNTEERING OPPORTUNITY ITSELF. FOOD, ACCOMMODATION, INTERNET AND OTHER SERVICES ARE PROVIDED TO THE VOLUNTEERS FOR A FLAT FEE OF 20€ PER DAY. VOLUNTEERS CAN ALSO JOIN OCCASSIONAL THE FIELD TRIPS FREE OF CHARGE. FEES FOR THIS POSITION CAN BE COVERED BY THE ERASMUS+ SCHOLARSHIP.

## HIGHLIGHTS OF THE PROGRAMME

- GAIN VALUABLE WORK EXPERIENCE IN THE WILDLIFE RESCUE CENTER
- LEARN ABOUT CAPTIVE WILDLIFE CARE AND HOW TO HANDLE AND RESTRAIN JUVENILE WILD ANIMALS
- ASSIST WITH EMERGENCY CARE AND TREATMENT OF INJURED, SICK, AND ORPHANED INFANT WILDLIFE
- LEARN TO IDENTIFY JUVENILES OF A DIVERSE RANGE OF SPECIES
- JOIN EDUCATIONAL EVENTS
- LIVE IN AN AREA SURROUNDED BY NATURE AND WITH A WHOLE ISLAND VIEW
- WORK IN A MULTINATIONAL TEAM OF VOLUNTEERS





# CARETAKERS FOR BABY NURSERY

TO SUBMIT YOUR APPLICATION, PLEASE VISIT:

**[HTTPS://V.CWRI.NET/PROJECTS/38](https://v.cwri.net/projects/38)**

OUR TEAM WILL CONTACT YOU AND SHARE ALL THE NECESSARY INFORMATION TO ARRANGE YOUR STAY.

PLEASE CONTACT US AT [INFO@CWRI.NET](mailto:info@cwri.net) IF YOU HAVE ANY QUESTIONS OR TROUBLE WITH THE APPLICATION SYSTEM.



# JOIN OUR TEAM

VOLUNTEERS FOR WILDLIFE HOSPITAL NEEDED!

5

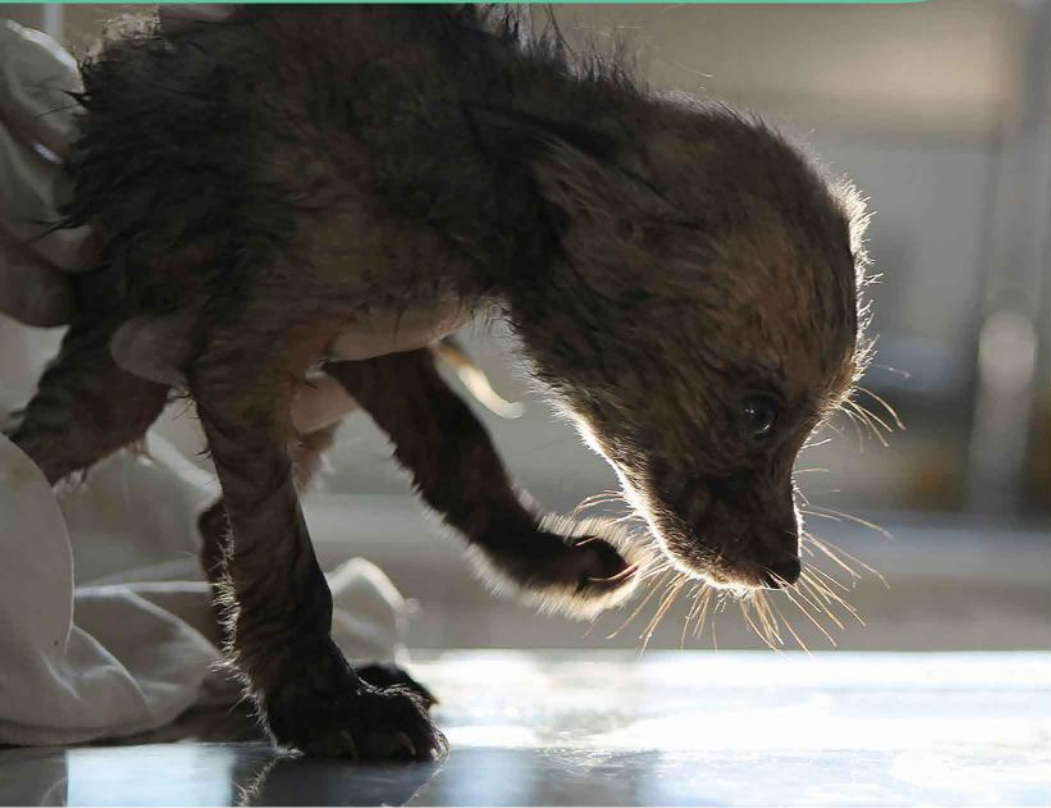
**WILDLIFE**  
HOSPITAL

✉ [INFO@CWRI.NET](mailto:INFO@CWRI.NET)

 [WWW.CWRI.NET](http://WWW.CWRI.NET)



# ANIMAL CARETAKERS FOR WILDLIFE HOSPITAL



## PROJECT DESCRIPTION

LOCATED WITHIN TAŞKENT NATURE PARK, OUR WILDLIFE HOSPITAL RECEIVES NEARLY 1000 ANIMAL PATIENTS, FROM AS MANY AS 160 SPECIES EACH YEAR. AFTER THE INITIAL ADMISSION, THEY RECEIVE SPECIALIZED, HIGH-QUALITY CARE TO ENSURE THEIR SAFE RETURN TO THE WILD. WE NOW PROVIDE A UNIQUE OPPORTUNITY FOR STUDENTS AND GRADUATES TO JOIN OUR TEAM AND EXPERIENCE DAILY LIFE AT OUR REMARKABLE FACILITY, ONE OF A KIND IN THE WHOLE OF CYPRUS!

WILDLIFE RESCUE AND REHABILITATION CENTER, OPERATED BY CYPRUS WILDLIFE RESEARCH INSTITUTE, IS AMONG THE FOREMOST WILDLIFE TREATMENT AND REHABILITATION CENTERS IN THE EASTERN MEDITERRANEAN REGION. OUR WORK IS ONLY ACHIEVED WITH THE SUPPORT OF OUR AMAZING VOLUNTEERS! BY APPLYING TO THIS PROGRAM, YOU WILL GET A CHANCE TO ATTEND THE TREATMENT AND REHABILITATION OF VARIOUS NATIVE, EXOTIC AND DOMESTIC SPECIES, SUCH AS REPTILES (SNAKES, TERRAPINS, TORTOISES, SEA TURTLES), BIRDS (RAPTORS, OWLS, SONGBIRDS, WADING BIRDS AND OTHERS) AND MAMMALS (DONKEYS, FOXES, HEDGEHOGS ...). YOU WILL NOT ONLY RECEIVE THEORY, BUT MORE IMPORTANTLY, PRACTICALLY LEARN HOW TO HANDLE AND RESTRAIN ANIMALS IN ORDER TO PERFORM AN EXAMINATION AND PROVIDE SPECIES-SPECIFIC ANIMAL CARE.



**OUR WILDLIFE HOSPITAL VOLUNTEERS ARE INVOLVED WITH EVERY ASPECT OF WILDLIFE REHABILITATION. THEY HELP WITH THE ADMISSION, STABILIZATION, INITIAL EXAMINATION, TREATMENT, REHABILITATION, AND PHYSICAL THERAPY OF INJURED, SICK, AND ORPHANED WILDLIFE. ADDITIONALLY, THEY HELP TO ENSURE THE SMOOTH FUNCTIONING OF THE FACILITY AND HIGH STANDARDS OF ANIMAL CARE.**



## **SPECIFIC DUTIES INCLUDE:**

- **ASSISTING WITH THE ASSESSMENT OF THE OVERALL HEALTH STATE OF OUR ANIMAL PATIENTS**
- **RESTRAINING AND HANDLING WILDLIFE FOR EXAMINATIONS AND TREATMENT**
- **PROVIDING SPECIALIZED TREATMENT AND THERAPY**
- **ANIMAL CARE (FEEDING, PROVIDING WATER, CLEANING)**
- **UPDATING ANIMAL CARE PROTOCOLS**
- **CLEANING AND SANITIZING HOSPITAL FACILITIES**
- **ADMINISTRATIVE TASKS, SUCH AS HELPING WITH THE INVENTORY OF PRODUCTS AND TOOLS**

# **ANIMAL CARETAKERS FOR WILDLIFE HOSPITAL**

**APART FROM TAKING CARE OF INJURED, SICK AND ORPHANED NATIVE FAUNA, OUR WILDLIFE HOSPITAL CARES AND TREATS FARM ANIMALS AND EXOTIC SPECIES THAT ARE HOUSED ON OUR PREMISES. THESE ANIMALS ARE BEING FREQUENTLY BROUGHT TO OUR FACILITY DUE TO POOR WELFARE CONDITIONS OR ILLEGAL ORIGIN. OUR VOLUNTEERS HELP TO ENSURE THE BEST POSSIBLE CARE (INCLUDING GENERAL ANIMAL CARE AND SPECIALIZED MEDICAL CARE) TO ALLOW THEM TO RESTORE THEIR SPECIES-SPECIFIC BEHAVIORS AND GOOD LEVELS OF PHYSICAL AND PSYCHOLOGICAL HEALTH.**





# ANIMAL CARETAKERS FOR WILDLIFE HOSPITAL

## ACCOMMODATION, FOOD AND TRANSPORT

OUR WILDLIFE HOSPITAL IS LOCATED WITHIN TAŞKENT NATURE PARK, WHICH IS SITUATED IN KYRENIA DISTRICT IN CYPRUS. OUR VOLUNTEERS ARE PROVIDED THE ACCOMMODATION AND KITCHEN FACILITIES, ALL WITHIN THE WALKING DISTANCE OF FACILITY'S CAMPUS. AFTER APPLYING TO THE PROGRAM, OUR COORDINATOR WILL HELP YOU WITH THE TRAVEL ARRANGEMENTS AND WILL DISCUSS THE POSSIBILITY OF AIRPORT TRANSFER ORGANIZED BY CWRI. PLEASE APPLY TO RECEIVE FURTHER DETAILS.



## REQUIREMENTS

- MINIMUM DURATION OF STAY: 1 MONTH
- GOOD PROFICIENCY IN ENGLISH
- EDUCATIONAL BACKGROUND IN BIOLOGY, VETERINARY, CONSERVATION, OR OTHER ANIMAL-RELATED FIELD
- RELIABILITY, TRUSTWORTHINESS, DEDICATION



## TRAINING DURING THE PROJECT

OUR FACILITY AIMS FOR THE HIGHEST STANDARDS OF ANIMAL CARE. FOR THIS REASON, WE ASK OUR VOLUNTEERS AND INTERNS TO HAVE AN EDUCATIONAL BACKGROUND IN VETERINARY, BIOLOGY, CONSERVATION, OR OTHER ANIMAL-RELATED FIELDS (ZOOTECHNICS, ANIMAL SCIENCE, AND OTHERS). PREVIOUS EXPERIENCE WITH WILDLIFE IS NOT REQUIRED. OUR TEAM OF EXPERTS WILL GUIDE YOU THROUGH THE PROCEDURES AND PROVIDE YOU WITH ALL THE NECESSARY INFORMATION TO ENSURE THE MOST VALUABLE WILDLIFE VETERINARY NURSE EXPERIENCE WHILE MAKING SURE THAT ALL SAFETY AND WELFARE REQUIREMENTS OF WILDLIFE REHABILITATION ARE MET.

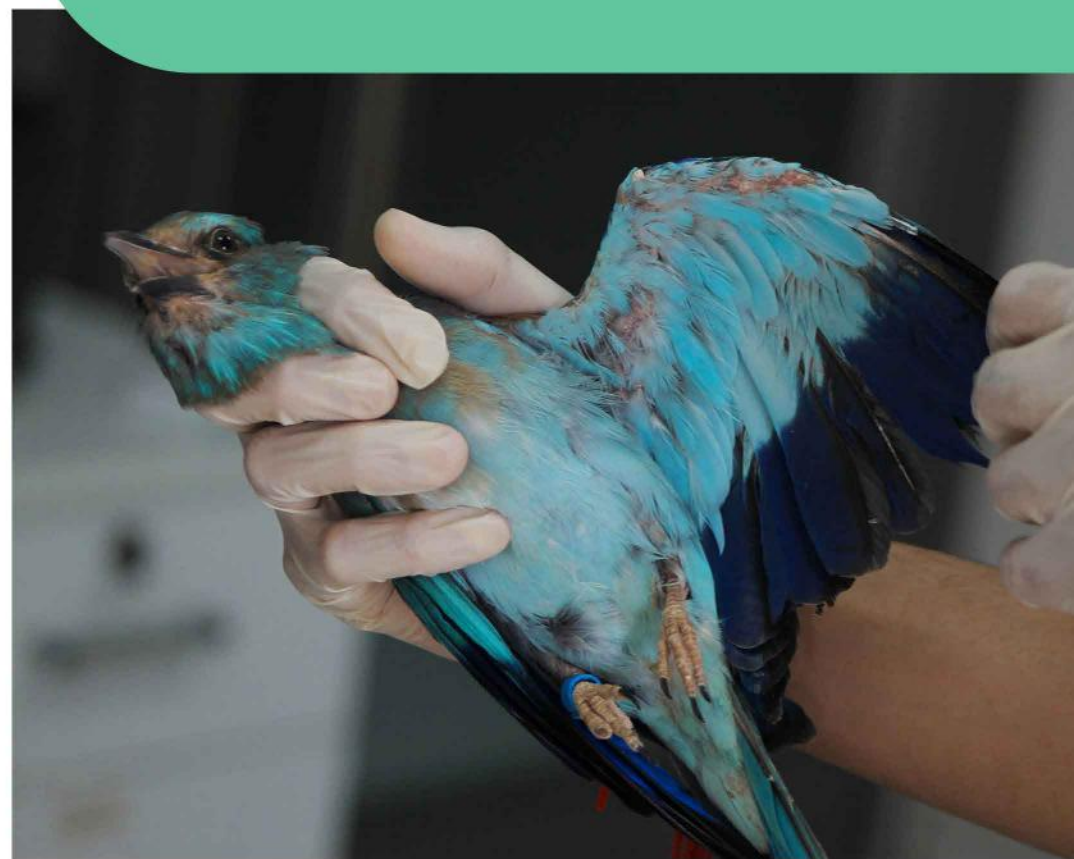
WHILST WE PREFER THAT APPLICANTS HAVE SOME EXPERIENCE IN THE RELEVANT FIELD, WE WELCOME ALL APPLICATIONS AND WILL REVIEW EACH EQUALLY AND FAIRLY. DO NOT LET THIS DISSUADE YOU FROM APPLYING!

## HIGHLIGHTS OF THE PROGRAMME

- GAIN VALUABLE WORK EXPERIENCE IN THE WILDLIFE HOSPITAL
- LEARN HOW TO HANDLE AND RESTRAIN WILD ANIMALS
- ASSIST WITH EMERGENCY CARE AND TREATMENT OF INJURED, SICK, AND ORPHANED WILDLIFE
- LEARN HOW TO RESTRAIN ANIMALS FOR RADIOGRAPHY
- ASSIST OUR EXPERT WILDLIFE VET AS A VET NURSE WITH SURGERIES, MEDICAL PROCEDURES, AND NECROPSIES
- LEARN HOW TO IDENTIFY HUNDREDS OF SPECIES, INCLUDING NATIVE MEDITERRANEAN FAUNA, EXOTIC AND DOMESTIC SPECIES
- JOIN EDUCATIONAL EVENTS
- LIVE IN AN AREA SURROUNDED BY NATURE AND WITH A WHOLE ISLAND VIEW
- WORK IN A MULTINATIONAL TEAM OF VOLUNTEERS



## ANIMAL CARETAKERS FOR WILDLIFE HOSPITAL



### COST

THERE IS NO FEE FOR THE VOLUNTEERING OPPORTUNITY ITSELF. FOOD, ACCOMMODATION, INTERNET AND OTHER SERVICES ARE PROVIDED TO THE VOLUNTEERS FOR A FLAT FEE OF 20€ PER DAY. VOLUNTEERS CAN ALSO JOIN OCCASSIONAL FIELD TRIPS FRE OF CHARGE. FEES FOR THIS POSITION CAN BE COVERED BY ERASMUS+ SCHOLARSHIP.

# ANIMAL CARETAKERS

FOR W I L D L I F E H O S P I T A L

TO SUBMIT YOUR APPLICATION, PLEASE VISIT:

**[HTTPS://V.CWRI.NET/PROJECTS/27](https://v.cwri.net/projects/27)**

OUR TEAM WILL CONTACT YOU AND SHARE ALL THE NECESSARY INFORMATION TO ARRANGE YOUR STAY.

PLEASE CONTACT US AT [INFO@CWRI.NET](mailto:info@cwri.net) IF YOU HAVE ANY QUESTIONS OR TROUBLE WITH THE APPLICATION SYSTEM.



# VOLUNTEER WITH US

VOLUNTEER SOCIAL MEDIA MANAGERS NEEDED!



## WILDLIFE

RESCUE AND REHABILITATION CENTER

6

✉ [INFO@CWRI.NET](mailto:info@cwri.net)

 [WWW.CWRI.NET](http://www.cwri.net)

CYPRUS WILDLIFE RESEARCH INSTITUTE IS A NON-PROFIT ORGANIZATION FOCUSING ON THE PROTECTION OF THE NATURE OF CYPRUS. LOCATED WITHIN TAŞKENT NATURE PARK, OUR WILDLIFE RESCUE AND REHABILITATION CENTER PROVIDES SPECIALIZED CARE FOR MORE THAN 1000 ANIMAL PATIENTS FROM MORE THAN 160 SPECIES EVERY YEAR. APART FROM INJURED NATIVE FAUNA AND DOMESTIC ANIMALS, EXOTIC SPECIES CONFISCATED FROM ILLEGAL TRADE ARE BEING HOUSED AND TAKEN CARE OF AT THIS FACILITY. WE NOW OFFER A NEW POSITION FOR VOLUNTEERS TO JOIN OUR TEAM AND DEVELOP THEIR SKILLS IN SOCIAL MEDIA CONTENT CREATION, SOCIAL MEDIA MANAGEMENT, PHOTOGRAPHY, AND VIDEO P R O D U C T I O N .



# CONTENT CREATORS FOR WILDLIFE RESCUE CENTER



## PROJECT DESCRIPTION

AS A VOLUNTEER, YOU WILL HAVE A CHANCE TO WITNESS, DOCUMENT, AND PUBLISH THE STORY OF ANIMALS THAT ARE BEING TREATED AT OUR FACILITY, DUE TO BEING SICK, INJURED, ORPHANED, MISTREATED, OR ILLEGALLY TRAFFICKED. APART FROM CAPTURING THE DAILY LIFE IN WILDLIFE HOSPITAL AND RESCUE AND REHABILITATION CENTER, YOU WILL ATTEND ANIMAL RESCUES AND RELEASES, TO CREATE A VISUAL NARRATIVE OF THE JOURNEY OF OUR ANIMAL PATIENTS.

# CONTENT CREATORS FOR WILDLIFE RESCUE CENTER



## SPECIFIC DUTIES INCLUDE:

- CREATE AND EDIT PHOTO/VIDEO CONTENT CAPTURING DAILY LIFE IN WILDLIFE HOSPITAL AND RESCUE AND REHABILITATION CENTER
- ATTEND AND DOCUMENT ANIMAL RESCUES AND RELEASES
- POST AND SCHEDULE CREATIVE CONTENT (TEXT, PHOTO/VIDEO, NEWS) ON OUR SOCIAL MEDIA CHANNELS
- KEEP OUR ONLINE COMMUNITY ACTIVE; COMMUNICATE AND INTERACT WITH OUR FOLLOWERS AND SUPPORTERS
- ANALYZE METRICS AND BUILD STRATEGIES TO INCREASE THE ONLINE PRESENCE AND ENGAGEMENT OF CWRI
- MANAGE IMAGE DATABASE AND ENTER NEW DATA

## TRAINING DURING THE PROJECT

YOU WILL BE TRAINED BY OUR TEAM TO UNDERSTAND THE CONCEPT AND IMPORTANCE OF CWRI'S MISSION, GOALS, AND IMPACT, AS WELL AS HOW TO USE VARIOUS TACTICS FOR OPTIMIZING SOCIAL MEDIA POSTS AND PROFILES TO REACH THEIR MAXIMUM POTENTIAL. WHILST WE PREFER THAT APPLICANTS HAVE SOME EXPERIENCE IN THE RELEVANT FIELD, WE WELCOME ALL APPLICATIONS AND WILL REVIEW EACH EQUALLY AND FAIRLY. DO NOT LET THIS DISSUADE YOU FROM APPLYING!



## ACCOMMODATION, FOOD AND TRANSPORT

THE CAMPUS OF CWRI IS LOCATED WITHIN TAŞKENT NATURE PARK, WHICH IS SITUATED IN KYRENIA DISTRICT IN CYPRUS. OUR VOLUNTEERS ARE PROVIDED THE ACCOMMODATION AND KITCHEN FACILITIES, ALL WITHIN THE WALKING DISTANCE OF THE FACILITY'S CAMPUS. AFTER APPLYING TO THE PROGRAM, OUR COORDINATOR WILL HELP YOU WITH THE TRAVEL ARRANGEMENTS AND DISCUSS THE POSSIBILITY OF AIRPORT TRANSFER ORGANIZED BY CWRI. PLEASE APPLY TO RECEIVE FURTHER DETAILS.

# CONTENT CREATORS FOR WILDLIFE RESCUE CENTER

## REQUIREMENTS

- MINIMUM DURATION OF STAY: 1 MONTH
- VOLUNTEERS ARE REQUIRED TO BRING THEIR OWN LAPTOPS AND EQUIPMENT FOR PHOTO/VIDEO RECORDING AND EDITING
- ADVANCED LEVEL OF ENGLISH LANGUAGE
- EXPERIENCE WITH CONTENT PRODUCTION, TOOL USE, AND MANAGEMENT OF SOCIAL MEDIA PLATFORMS
- UNDERSTANDING CURRENT TRENDS IN SOCIAL MEDIA MARKETING
- STRONG COMMUNICATION SKILLS AND ABILITY TO COMMUNICATE VIEWPOINTS CREATIVELY
- CREATIVITY AND ATTENTION TO DETAIL





# CONTENT CREATORS FOR WILDLIFE RESCUE CENTER



## COST

THERE IS NO FEE FOR THE VOLUNTEERING OPPORTUNITY ITSELF. FOOD, ACCOMMODATION, INTERNET AND OTHER SERVICES ARE PROVIDED TO THE VOLUNTEERS FOR A FLAT FEE OF 20€ PER DAY. VOLUNTEERS CAN ALSO JOIN OCCASIONAL FIELD TRIPS FRE OF CHARGE. FEES FOR THIS POSITION CAN BE COVERED BY THE ERASMUS+ SCHOLARSHIP.

## HIGHLIGHTS OF THE PROGRAMME

- GAIN VALUABLE WORK EXPERIENCE TO KICKSTART YOUR SOCIAL MEDIA CAREER
- LEARN HOW TO MANAGE YOUR OWN SCHEDULE TO MEET THE DEADLINES SET BY THE PROJECT COORDINATOR
- WITNESS THE FASCINATING PROCESS OF A WILDLIFE RESCUE MISSION, WILDLIFE REHABILITATION, AND RELEASE
- WORK IN A MULTINATIONAL TEAM OF VOLUNTEERS
- EXPERIENCE DAILY LIFE IN A REMARKABLE FACILITY, ONE OF A KIND IN THE WHOLE OF CYPRUS
- LIVE IN AN AREA SURROUNDED BY NATURE AND WITH A WHOLE ISLAND VIEW
- JOIN EDUCATIONAL EVENTS
- LEARN ABOUT MEDITERRANEAN FAUNA, EXOTIC AND DOMESTIC SPECIES



# CONTENT CREATORS FOR WILDLIFE RESCUE CENTER

TO SUBMIT YOUR APPLICATION, PLEASE VISIT:

**[HTTPS://V.CWRI.NET/PROJECTS/31](https://v.cwri.net/projects/31)**

OUR TEAM WILL CONTACT YOU AND SHARE ALL THE NECESSARY INFORMATION TO ARRANGE YOUR STAY.

PLEASE CONTACT US AT [INFO@CWRI.NET](mailto:info@cwri.net) IF YOU HAVE ANY QUESTIONS OR TROUBLE WITH THE APPLICATION SYSTEM.



7

**NORTH**  
C Y P R U S

 [INFO@CWRI.NET](mailto:INFO@CWRI.NET)

**ARTHROPOD FIELD STUDY**

**VOLUNTEERS NEEDED!**

CYPRUS WILDLIFE RESEARCH INSTITUTE WAS ESTABLISHED IN 2018 AS AN UMBRELLA ORGANIZATION FOCUSING ON THE PROTECTION OF THE WELL-BEING OF NATURE AND WILDLIFE OF CYPRUS, AND THE WIDER LEVANTINE BASIN. RESEARCH CONDUCTED UNDER CWRI HELPS TO FILL THE DATA GAPS ON THE BIODIVERSITY OF THE CYPRIOT REGION, CONSTITUTING A PARAMOUNT ACTIVITY OF NATURE CONSERVATION. APART FROM IMPROVING THE LEVEL OF KNOWLEDGE OF LOCAL RARE, CRYPTIC, AND ENDEMIC SPECIES, IT ENABLES EFFECTIVE MONITORING OF HABITATS AT THE LANDSCAPE LEVEL, AND THE DEVELOPMENT OF CONSERVATION STRATEGIES ENSURING SUSTAINABLE ECOSYSTEMS.



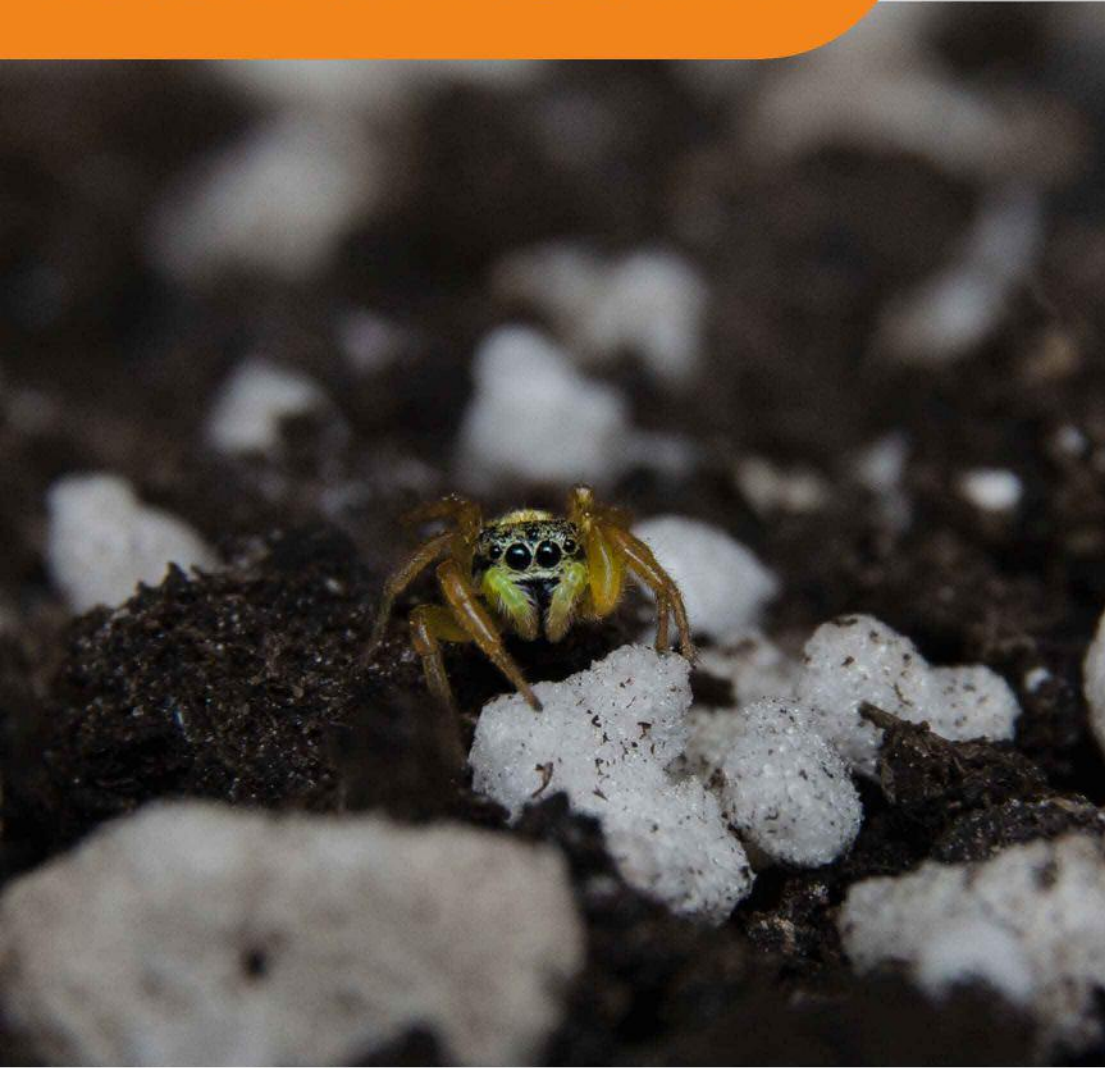
# ARTHROPOD RESEARCH ASSISTANT



## PROJECT DESCRIPTION

ARTHROPODS, AND ITS LARGEST AND MOST VARIED GROUP, INSECTS, ARE AMONGST THE MOST SUCCESSFUL AND DIVERSE GROUPS OF ANIMALS ON EARTH. DESPITE BEING BOTH HIGHLY ABUNDANT AND INTEGRAL FOR THE FUNCTIONING OF MOST ECOSYSTEMS, OUR KNOWLEDGE, AND UNDERSTANDING OF ARTHROPODS, ARE STILL LARGELY LIMITED AND IGNORED IN MOST PARTS OF THE WORLD. IN THIS SENSE, FIELD STUDIES ARE THE MOST FUNDAMENTAL AND ESSENTIAL WAYS TO IMPROVE THE STATE OF KNOWLEDGE OF ARTHROPODS, AND FILL THE GAPS REGARDING ARTHROPOD'S GENERAL BIOLOGY, ECOLOGY, AND INCREASINGLY IMPORTANT CONSERVATION.

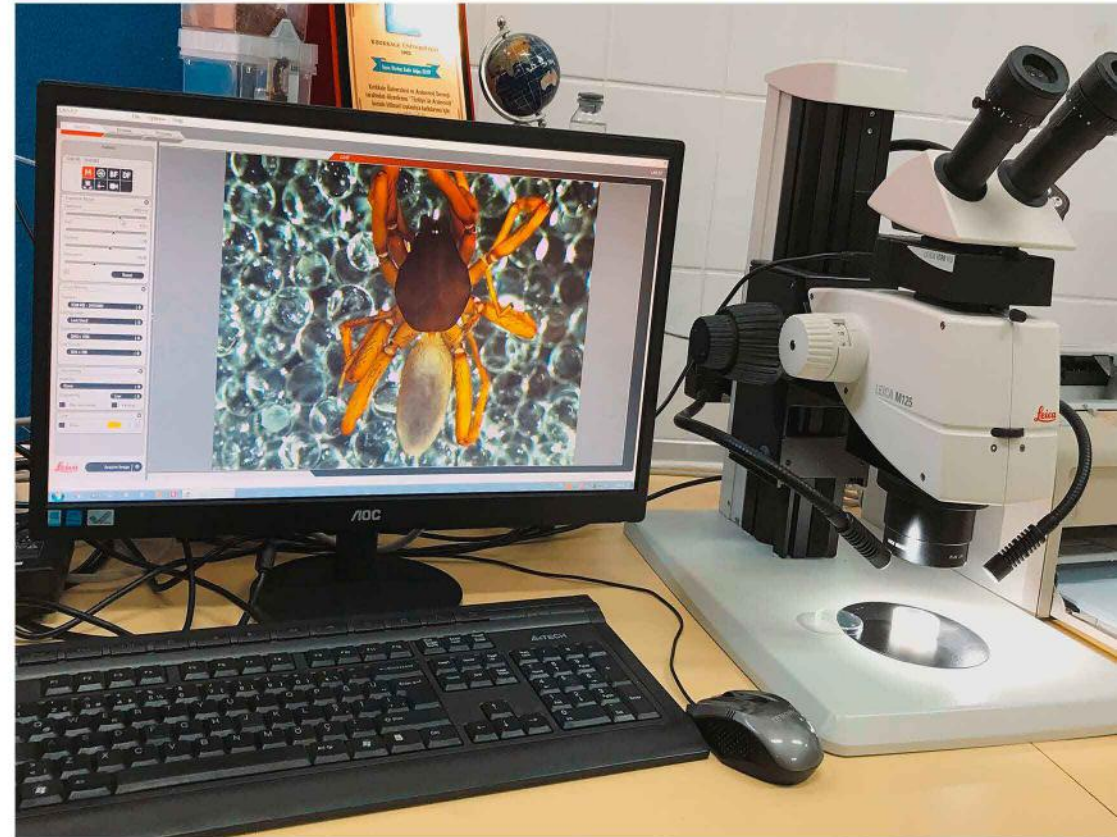
# ARTHROPOD RESEARCH ASSISTANT



OUR INSTITUTE NOW OFFERS A UNIQUE OPPORTUNITY FOR VOLUNTEERS TO JOIN OUR EXPERT ARACHNOLOGIST ON FIELD STUDIES TO COLLECT VALUABLE SCIENTIFIC DATA ON LOCAL TERRESTRIAL ARTHROPODS FROM DIFFERENT HABITATS ACROSS CYPRUS.

## SPECIFIC DUTIES INCLUDE:

- ATTEND ZOOLOGICAL LESSONS TO DEVELOP THEORETICAL KNOWLEDGE ON BIOLOGY, EVOLUTION, TAXONOMY, AND INTERRELATIONSHIPS OF ARTHROPODS
- LEARN AND PRACTICE SAMPLING METHODS APPLIED IN DIVERSE NATURAL AND ARTIFICIAL HABITATS
- PRACTICE THE IDENTIFICATION OF ARTHROPOD TAXA IN THE FIELD AND IN THE LABORATORY
- SEPARATE, DISSECT, ANALYZE AND PRESERVE COLLECTED SAMPLES IN A LABORATORY
- ANALYZE THE DATA AND WRITE SHORT REPORTS SUMMARIZING YOUR FINDINGS
- LEARN ABOUT EXPERIMENTAL RESEARCH DESIGN
- FIND OUT ABOUT THE FUTURE RESEARCH OPPORTUNITIES AND POSSIBILITIES OF COLLABORATION WITH CWRI
- CONTRIBUTE TO THE KNOWLEDGE OF THE BIODIVERSITY OF CYPRUS



## TRAINING DURING THE PROJECT

AS A VOLUNTEER APPLYING TO THIS PROGRAM, YOU WILL ATTEND WEEKLY ZOOLOGICAL LESSONS LED BY OUR EXPERT ARACHNOLOGIST, TO DEVELOP YOUR KNOWLEDGE OF ARTHROPOD BIOLOGY, ZOOGEOGRAPHY, EVOLUTION, ECOLOGY, AND TAXONOMY. YOU WILL BE GUIDED TO LEARN AND PRACTICE HOW TO SET UP TRAPS FOR ARTHROPODS COLLECTION, HOW TO PROPERLY DISSECT AND PRESERVE COLLECTED SPECIMENS AND HOW TO OPERATE A STEREOSCOPIC MICROSCOPE. PREVIOUS KNOWLEDGE OF ARTHROPOD TAXONOMY IS NOT CONSIDERED A PREREQUISITE FOR BEING ACCEPTED TO THE PROGRAM. OUR PROGRAMS ARE DESIGNED TO COVER BOTH THEORETICAL KNOWLEDGE AND PRACTICAL FIELD SKILLS TO ENSURE THE MOST VALUABLE WORK EXPERIENCE FOR ALL YOUNG ARTHROPOD ENTHUSIASTS!



## ACCOMMODATION, FOOD AND TRANSPORT

OUR VOLUNTEERS ARE HOUSED IN BUNGALOWS, LOCATED WITHIN TAŞKENT NATURE PARK, WHICH IS SITUATED IN KYRENIA DISTRICT IN CYPRUS. AS A VOLUNTEER, YOU WILL BE PROVIDED THE ACCOMMODATION AND KITCHEN FACILITIES, ALL WITHIN THE WALKING DISTANCE OF THE MAIN CAMPUS OF CYPRUS WILDLIFE RESEARCH INSTITUTE. AFTER APPLYING TO THE PROGRAM, OUR COORDINATOR WILL HELP YOU WITH THE TRAVEL ARRANGEMENTS AND WILL DISCUSS THE POSSIBILITY OF AIRPORT TRANSFER ORGANIZED BY CWRI. PLEASE APPLY TO RECEIVE FURTHER DETAILS.

# ARTHROPOD RESEARCH ASSISTANT

## REQUIREMENTS

- MINIMUM DURATION OF STAY: 1 MONTH
- ADVANCED LEVEL OF ENGLISH LANGUAGE
- BASIC OUTDOOR TRAINING
- NO MEDICAL CONDITIONS OR DISABILITIES THAT PREVENT WORKING IN DIFFICULT FIELD CONDITIONS
- NO ALLERGIES TO ARTHROPOD BITES AND STINGS
- NOT BEING AFRAID OF ENCLOSED AND/OR TIGHT-FITTING SPACE THE DARK AND ARTHROPODS
- DRIVER'S LICENCE



# ARTHROPOD RESEARCH ASSISTANT



## COST

THERE IS NO FEE FOR THE VOLUNTEERING OPPORTUNITY ITSELF. FOOD, ACCOMMODATION, INTERNET AND OTHER SERVICES ARE PROVIDED TO THE VOLUNTEERS FOR A FLAT FEE OF 20€ PER DAY. VOLUNTEERS CAN ALSO JOIN OCCASIONAL FIELD TRIPS FREE OF CHARGE. FEES FOR THIS POSITION CAN BE COVERED BY ERASMUS+

S C H O L A R S H I P .

## HIGHLIGHTS OF THE PROGRAMME

- LEARN ABOUT THE BIOLOGY, DIVERSITY AND EVOLUTION OF ARTHROPODS
- EXPLORE AND LEARN ABOUT THE RELEVANCE OF ARTHROPODS IN THE FIELDS OF ECOLOGY, BIOMEDICINE AND BIOMATERIALS
- LEARN TO IDENTIFY ARTHROPOD TAXA IN THE FIELD AND LABORATORY
- MASTER THE CORRECT APPLICATION OF SAMPLING METHODS IN DIFFERENT HABITATS (F.EX. ARID, SEMI-ARID, PINE FORESTS, CAVES, ETC.)
- GET FAMILIAR WITH THE LAB ENVIRONMENT, A NECESSARY COMPONENT OF MANY LIFE SCIENCE DISCIPLINES
- DEVELOP AND DEEPEN YOUR STEREO MICROSCOPY SKILLS
- LEARN THE METHOD OF SCORPION VENOM MILKING
- GAIN VALUABLE WORK EXPERIENCE TO PREPARE YOU FOR A CAREER IN ENTOMOLOGY, ARACHNOLOGY AND CONSERVATION





# ARTHROPOD RESEARCH ASSISTANT

TO SUBMIT YOUR APPLICATION, PLEASE VISIT:

**[HTTPS://V.CWRI.NET/PROJECTS/36](https://v.cwri.net/projects/36)**

OUR TEAM WILL CONTACT YOU AND SHARE ALL THE NECESSARY INFORMATION TO ARRANGE YOUR STAY.

PLEASE CONTACT US AT [INFO@CWRI.NET](mailto:info@cwri.net) IF YOU HAVE ANY QUESTIONS OR TROUBLE WITH THE APPLICATION SYSTEM.





8

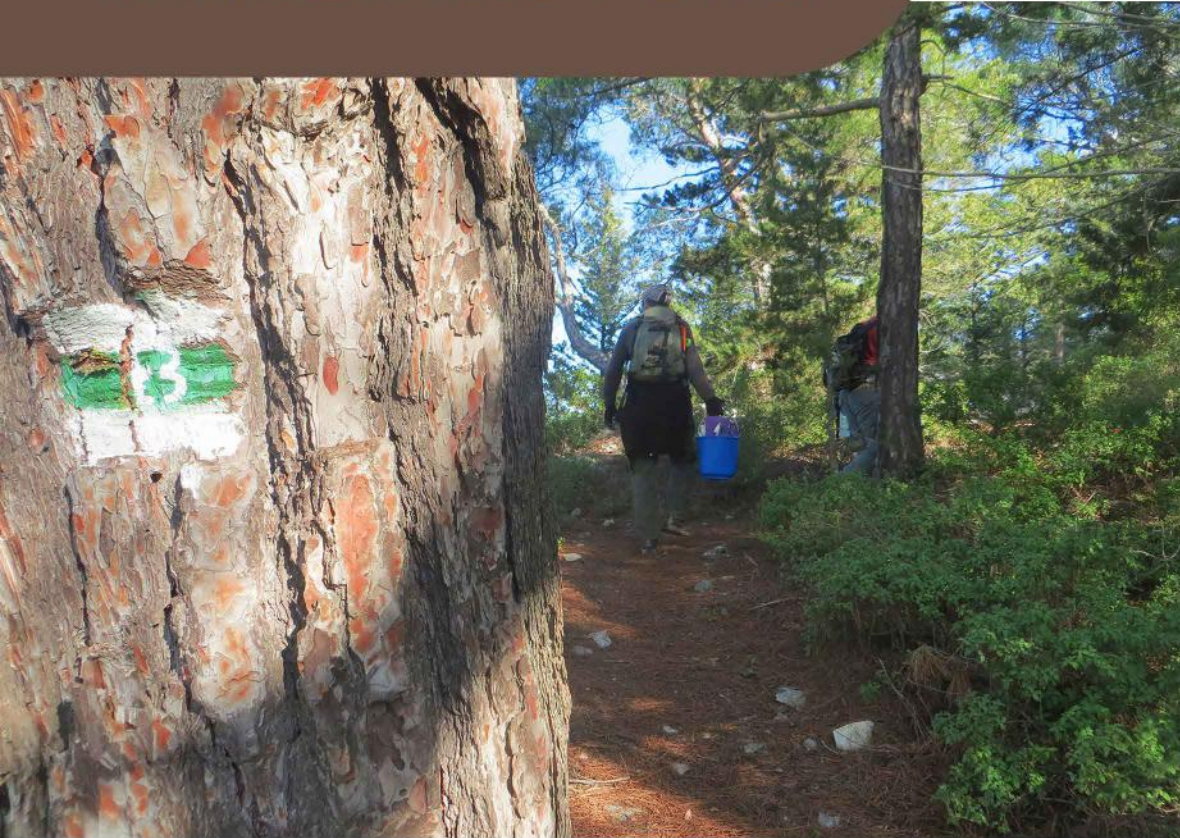


CYPRUS

VOLUNTEER AND HIKE  
IN CYPRUS!



# TRAIL MAINTENANCE TEAM



HIKING TRAILS ARE AN ESSENTIAL PART OF THE INFRASTRUCTURE IN PROTECTED / NATURAL AREAS. TRAILS ALLOW PEOPLE TO EXPLORE NATURE WITH MINIMAL IMPACT, DIVERT PEOPLE AWAY FROM SENSITIVE HABITATS TOWARDS LESS SENSITIVE AND MORE AESTHETIC LANDSCAPES, AND OFFER AN OPPORTUNITY FOR BOTH LOCALS AND FOREIGN VISITORS TO IMMERSE THEMSELVES IN NATURE AND GET IN TOUCH WITH WILDLIFE. IT IS AN IMPORTANT TOOL FOR LEARNING ABOUT NATURE, PROTECTED SPECIES, AND HABITATS. THE HIKING TRAILS IN THE NORTHERN PART OF CYPRUS ARE OFFICIALLY DESIGNATED BY THE MINISTRY OF TOURISM AND ENVIRONMENT AND WHILE BEING MAINTAINED BY TASKENT NATURE P A R K .

WE NOW OFFER A NEW POSITION FOR VOLUNTEERS TO JOIN OUR "TRAIL MAINTENANCE TEAM" AND DEVELOP THEIR SKILLS IN PROTECTED AREA VISITOR MANAGEMENT, MAPPING AND QUANTIFYING FIELDWORK, THE IDENTIFICATION OF RARE, ENDEMIC, AND NATIVE VEGETATION, THE LOGISTICAL PLANNING OF FIELDWORK IN REMOTE AREAS AND THE PHYSICAL LABOR WITH HAND TOOLS.

## PROJECT DESCRIPTION

AS A VOLUNTEER, YOU WILL HAVE A CHANCE TO BE OUT IN NATURE ALL DAY WITH YOUR TEAM, BE PHYSICALLY ACTIVE, AND WORK IN SOME OF THE MOST BEAUTIFUL NATURAL AREAS IN THE MOUNTAINS AND COASTLINE. THE TRAILS TO BE MAINTAINED ARE DISTRIBUTED FROM THE VERY WEST TO THE VERY EASTERN TIP OF THE ISLAND. UNDER THE SUPERVISION OF THE TRAIL EXPERT, THE TRAIL MAINTENANCE TEAM PLANS THE LOGISTICS OF FIELDWORK, EXECUTES THE REQUIRED WORK IN THE FIELD, AND PRESENTS THE WORK IN WRITTEN FORM.



# TRAIL

MAINTENANCE TEAM



## SPECIFIC DUTIES INCLUDE:

- LOGISTICAL PLANNING OF MATERIALS AND EQUIPMENT FOR FIELDWORK
- IDENTIFYING, MAPPING, AND QUANTIFYING MAINTENANCE WORKS
- RAKING THE FOOTPATH, WEEDING, PRUNING OVERGROWN BUSHES
- EXCAVATING THE SOIL WITH HAND TOOLS
- REPAINTING THE FADED TRAIL PAINT MARKS USING STENCILS
- HELPING WITH BUILDING WOODEN AND STONE STEPS
- EDGING THE PATH WITH ROCKS
- KEEPING WRITTEN / PHOTOGRAPHIC RECORDS OF THE WORK

## TRAINING DURING THE PROJECT

YOU WILL BE TRAINED BY OUR TEAM TO UNDERSTAND THE CONCEPT AND IMPORTANCE OF CWRI'S MISSION, GOALS, AND IMPACT, AS WELL AS HOW TO DO ALL THE WORK IN THE MAINTENANCE OF THE HIKING TRAILS. WHILST WE PREFER THAT APPLICANTS HAVE SOME EXPERIENCE IN PHYSICAL LABOR, USING HAND TOOLS, AND SPENDING AN ENTIRE DAY IN NATURE, WE WELCOME ALL APPLICATIONS AND WILL REVIEW EACH EQUALLY AND FAIRLY.



## ACCOMMODATION, FOOD AND TRANSPORT

VOLUNTEERS FROM THIS PROGRAM ARE PROVIDED ACCOMMODATION AND KITCHEN FACILITIES LOCATED IN THE TASKENT NATURE PARK. AFTER APPLYING TO THE PROGRAM, OUR COORDINATOR WILL HELP YOU WITH THE TRAVEL ARRANGEMENTS AND DISCUSS THE POSSIBILITY OF AIRPORT TRANSFER ORGANIZED BY THE CYPRUS WILDLIFE RESEARCH INSTITUTE. PLEASE APPLY TO RECEIVE FURTHER DETAILS.

# TRAIL MAINTENANCE TEAM

## REQUIREMENTS

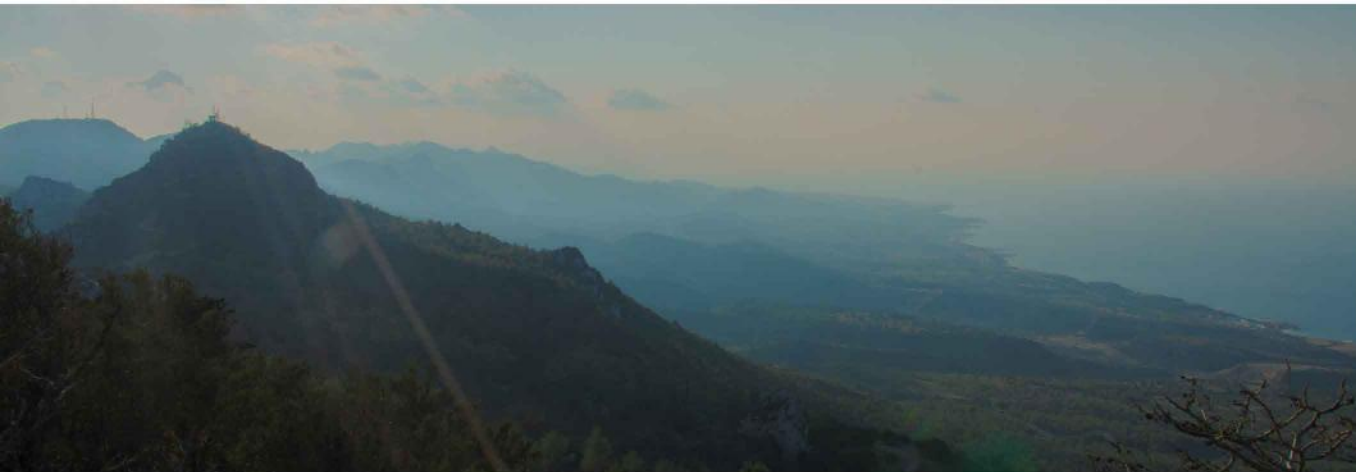
- MINIMUM DURATION OF STAY: 1 MONTH
- INTERMEDIATE LEVEL OF ENGLISH LANGUAGE
- ABILITY TO WALK A MINIMUM OF 12 KM PER DAY IN NATURAL TERRAIN
- EXPERIENCE WITH USING HAND TOOLS, NAVIGATION AND GOOGLE MAPS APP ON A SMARTPHONE
- OUTDOOR GEAR
- ABILITY TO CARRY OWN FOOD AND WATER SUPPLIES AND ONE HAND TOOL
- ABILITY TO WORK IN A TEAM
- ABILITY TO FOLLOW INSTRUCTIONS
- DRIVERS LICENSE VALID IN CYPRUS IS A PLUS



# TRAIL MAINTENANCE TEAM

## HIGHLIGHTS OF THE PROGRAMME

- WORK IN A MULTINATIONAL TEAM OF VOLUNTEERS
- LIVE IN AN AREA SURROUNDED BY NATURE AND WITH A VIEW OF THE MOUNTAINS
- WORK IN REMOTE NATURAL AREAS WITH BEAUTIFUL VIEWS OF FORESTS, MOUNTAINS, AND SEASIDE
- ENJOY OUTDOORS ALL DAY LONG
- LEARN ABOUT MEDITERRANEAN FAUNA, FLORA, AND GEOGRAPHY
- GAIN VALUABLE FIELDWORK EXPERIENCE
- LEARN ABOUT DAILY LIFE IN TASKENT NATURE PARK'S WILDLIFE RESCUE AND REHABILITATION CENTER



## COST

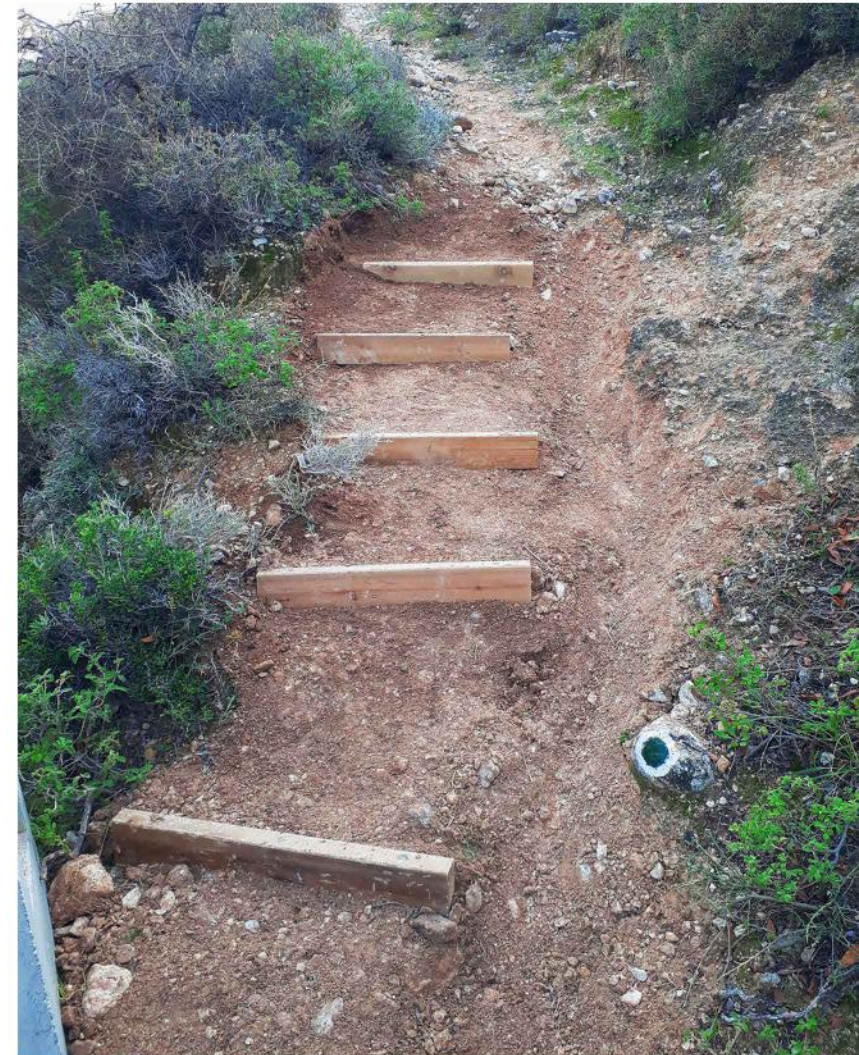
THERE IS NO FEE FOR THE VOLUNTEERING OPPORTUNITY ITSELF. FOOD, ACCOMMODATION, INTERNET AND OTHER SERVICES ARE PROVIDED TO THE VOLUNTEERS FOR A FLAT FEE OF 20€ PER DAY. VOLUNTEERS CAN ALSO JOIN OCCASSIONAL FIELD TRIPS AT NO ADDITIONAL COST. FEES FOR THIS POSITION CAN BE COVERED BY ERASMUS+ SCHOLARSHIP.

## AVAILABLE DATES

THIS VOLUNTEERING OPPORTUNITY ACCEPTS VOLUNTEERS FOR THREE DIFFERENT SESSIONS:

- 15. APRIL 2023 – 15. MAY 2023 (30 DAYS)
- 07. SEPTEMBER 2023 – 07. OCTOBER 2023 (30 DAYS)
- 15. OCTOBER 2023 – 30. NOVEMBER 2023 (45 DAYS)

VOLUNTEERS MUST ATTEND THE ENTIRE SESSION PERIOD.



A person in a red shirt and blue jeans is walking away from the camera on a rocky, gravelly trail. The trail is surrounded by dry, scrubby vegetation and some green bushes. In the background, there are more trees and a clear blue sky with some white clouds. The overall scene is a natural, outdoor setting.

# TRAIL MAINTENANCE TEAM

TO SUBMIT YOUR APPLICATION, PLEASE VISIT:

**[HTTPS://V.CWRI.NET/PROJECTS/39](https://v.cwri.net/projects/39)**

OUR TEAM WILL CONTACT YOU AND SHARE ALL THE NECESSARY INFORMATION TO ARRANGE YOUR STAY.

PLEASE CONTACT US AT [INFO@CWRI.NET](mailto:info@cwri.net) IF YOU HAVE ANY QUESTIONS OR TROUBLE WITH THE APPLICATION SYSTEM.





**JOIN OUR TEAM  
TODAY!**



# *FOLLOW US!*

[WWW.CWRI.NET](http://WWW.CWRI.NET) 

[WWW.FB.COM/CYPRUSWILDLIFE](http://WWW.FB.COM/CYPRUSWILDLIFE) 

[WWW.FB.COM/TASKENTDOGAPARKI](http://WWW.FB.COM/TASKENTDOGAPARKI) 

[WWW.FB.COM/MARINELIFECENTER](http://WWW.FB.COM/MARINELIFECENTER) 

[WWW.INSTAGRAM.COM/CYPRUSWILDLIFE](http://WWW.INSTAGRAM.COM/CYPRUSWILDLIFE) 

[WWW.INSTAGRAM.COM/DOGAPARKI](http://WWW.INSTAGRAM.COM/DOGAPARKI) 

[WWW.INSTAGRAM.COM/CYPRUSMARINELIFE](http://WWW.INSTAGRAM.COM/CYPRUSMARINELIFE) 

[WWW.YOUTUBE.COM/@CYPRUSWILDLIFE](http://WWW.YOUTUBE.COM/@CYPRUSWILDLIFE) 

CYPRUS WILDLIFE - KIBRIS YABAN HAYATI - ΑΤΡΙΑ ΦΥΣΗ ΤΗΣ ΚΥΠΡΟΥ

